

KEYBRIDGE HOUSE



London homes,
the Mount Anvil way

JULY 2015

ISSUE NO. 02

CONTACT

020 7776 1821

INFO@BTEXCHANGEREDVELOPMENT.CO.UK

WELCOME TO THE LOCAL RESIDENTS' NEWSLETTER

Hi all, and welcome to the second of our regular newsletters for residents local to the Keybridge House redevelopment. It's been an exciting and productive quarter for us on site - I'm sure you'll have seen the new hoardings that are now up, and with the appointment of a demolition specialist we're making some real headway.

Read on for an overview of progress on site and in the area. If you have any questions or concerns please don't hesitate to contact me directly via email, on info@btxchangeredevlopment.co.uk, or by phone on 020 7776 1821.

Bradley Goding, Project Manager

APPRENTICESHIPS FROM K10

MOUNT ANVIL will be working with construction apprenticeship provider K10 to offer a number of apprenticeships on site at Keybridge House.

K10WAS founded in 2010 to address the declining number of apprentices working in the construction sector, and the difficulties that contractors faced when committed to delivering effective apprenticeship programmes.

WORKING IN collaboration with the National Apprenticeship Service and local authorities, as well as developers, contractors, training providers and others, K10 supports the delivery of a high quality apprenticeship programme, and are the perfect partner for Mount Anvil.

WE WOULD love for local residents to be among those taking up apprenticeships on site. A number of places will be available across the site, covering a number of important sectors, processes and job roles.

IF YOU are interested in finding out more about the great opportunities that Mount Anvil and K10 are bringing to Keybridge House, please email hello@k-10.co.uk now - we look forward to working with you! ●



CURRENT SITE STATUS & FUTURE WORKS

For a brief summary of important dates for future works, see 'Important Dates' below.

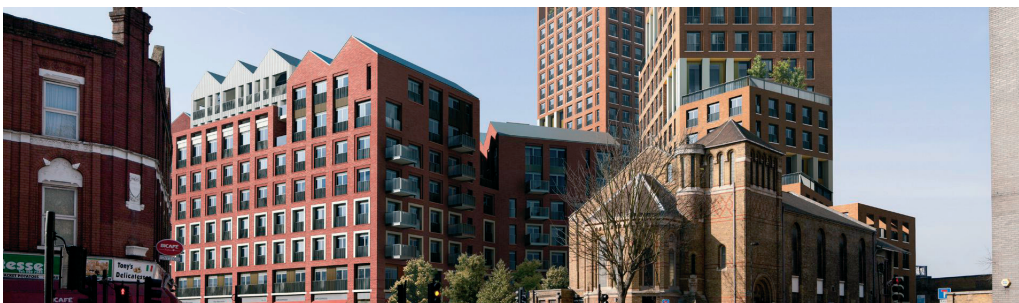
THE DEMOLITION of existing structures on site will begin next month, following the appointment of Essex-based structural demolition specialists Micor to Keybridge House. Our focus during the process of demolition to ground level will be on minimising disruption for local residents, and all contractors will be held to Mount Anvil's highest standards of safety, planning and execution.

HOARDINGS ARE now up around the site, meaning that the next stage ahead of structural demolition can begin in earnest - a comprehensive process of asbestos removal. Again, we will ensure that this process is carried out in line with our world-class Health and Safety standards.

SPECIAL PROVISION is being made for works being carried out around and alongside the railway, and 24hr

security patrols are now in place on site.

WE HAVE now installed monitors that will stay in place throughout the entire demolition cycle. These monitors will detect any undue movement caused by work at Keybridge House immediately. They will feed back their findings through a web portal, and enable us to take immediate action. ●



IMPORTANT DATES 2015/16

» BEGINNING OF DEMOLITION PHASE	APRIL 2015	» STRUCTURAL DEMOLITION BEGINS	AUGUST 2015
» HOARDING COMPLETE	JULY 2015	» ANTICIPATE COMPLETION OF DEMOLITION	MARCH 2016

WHAT'S THE LATEST ON SITE:

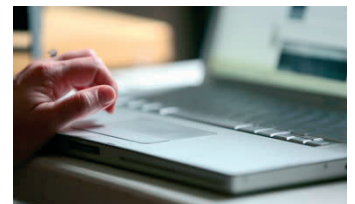
- Residents' Webpage for latest news
- Logistics Planning Now Underway

THE RESIDENTS' WEBPAGE

WE HOPE that you have already been using the local residents' webpage and finding it useful for keeping up to date with all the latest news from site.

REMEMBER THAT the webpage can work as a platform for dialogue between local residents and Mount Anvil. Don't hesitate to get in touch with any questions, queries or suggestions you may have about the redevelopment project, and let us know what we could be doing more of to keep you informed.

VISIT THE residents' webpage now for more information, or to get in touch, at www.btxchangeredevlopment.co.uk. ●



LOGISTICS PLANNING

LOGISTICS PLANNING sounds dull, but it's massively important. It incorporates all sorts of planning around the movement of materials to and from site, the storage of materials and equipment, the bringing in of goods and services, and much, much more.

IT'S A complex process - but one that is worth spending the time getting right. If we get the planning right it makes life easier for local residents, Mount Anvil and our contractors, allowing for smooth running throughout the redevelopment. That's why we're currently working with the local council to ensure everything is being done in the most efficient and least disruptive way possible. ●